

PH SERIES

9+ SEER

**Self-Contained
Packaged Heat Pump
50 HZ**

3 to 5 Ton

Nominal Cooling Capacity: 36,000 to 60,000 BTUH
[10.6 kW to 17.6 kW]

Nominal Heating Capacity: 36,000 to 60,000 BTUH
[10.6 kW to 17.6 kW]



Outdoor self-contained package heat pump allows for side-by-side, ground-level or rooftop application.

Standard Features

- Two-speed evaporator blower motor; low speed for normal or low-static applications, high speed for high-static applications
- Quiet-operating top condenser discharge
- Copper tube/aluminum fin coils
- Totally enclosed, permanently lubricated condenser fan motor
- Hermetically sealed compressor with internal relief valve
- Fully charged R-22 system
- Bi-flow liquid line filter drier
- Suction line accumulator
- Check-flowrator expansion device
- Crankcase heater
- High-efficiency performance
- Square to round duct converter for mobile home application
- Bottom pan rails elevate the unit above the slab

Cabinet Construction

- Zinc-coated enamel finish
- Fully insulated air handling compartment
- Convenient access panels

Accessories

- Heat Kit from 11.2 to 14.7 kW with plug-in connection
- Room Thermostat (HPT18-60)
- Outdoor Thermostat (OT18-60)
- Thermostat (CHTP18-60HD)

Accessories (Field Supplied)

- Roof curb
- Downflow Plenum (includes filter rack)
- Manual fresh air damper (to be used w/ Downflow Plenum)
- Economizer (to be used w/Downflow Plenum)

Accessory Heat Kit Features

- Primary limit protection
- Rust-resistant nickel chromium heating elements (See Electrical Data Chart)

PRODUCT SPECIFICATIONS

Specifications

	PH036-5	PH048-5	PH060-5
Total Cooling—BTUH	36000	48000	53000
Sensible Cooling—BTUH	26600	35500	38100
SEER (see Note 1)	10.2	10.0	9.70
Heating—BTUH @ 470 °F	36000	47000	53000
C.O.P. (470 °F)	3.00	3.20	3.00
Heating—BTUH @ 170 °F	19000	25400	28000
C.O.P. (170 °F)	2.00	2.00	2.00
Sound Rating (bels)	8.40	8.40	8.40
Indoor Blower			
Type	DD	DD	DD
Size—D x W	10 x 6	10 x 8	10 x 8
Motor Horsepower	1/2	3/4	3/4
Evaporator Coil			
Face Area (Ft ²)	6.22	6.22	6.22
Fin/In.	14	14	14
No. of Rows	2	3	3
Outdoor Fan			
Fan Diameter (In.)	22	22	22
Motor Horsepower	1/4	1/4	1/4
Condenser Coil			
Face Area (Ft ²)	16.2	16.2	16.2
Fin/In.	19	19	19
No. of Rows	1	1	2
Electrical			
Ph	3	3	3
Volts	380/415	380/415	380/415
Compressor RLA	6.1	9.6	10.3
Compressor LRA	39.0	62.0	62.0
Indoor Blower FLA	1.4	2.2	2.2
Outdoor Blower FLA	0.8	0.8	0.8
Minimum Circuit Ampacity	9.9	15.0	15.9
M.O.P. (see Note 2)	15	20	25
Shipping Weight—pounds [kg]	371 [168.4]	387 [175.7]	423 [192.0]

NOTES:

1. Per ARI 240 and 270 test standards.
2. M.O.P. (Maximum Overcurrent Protection)
3. May use fuses or HACR type Circuit Breakers of the same size as noted.

Evaporator Blower Specifications

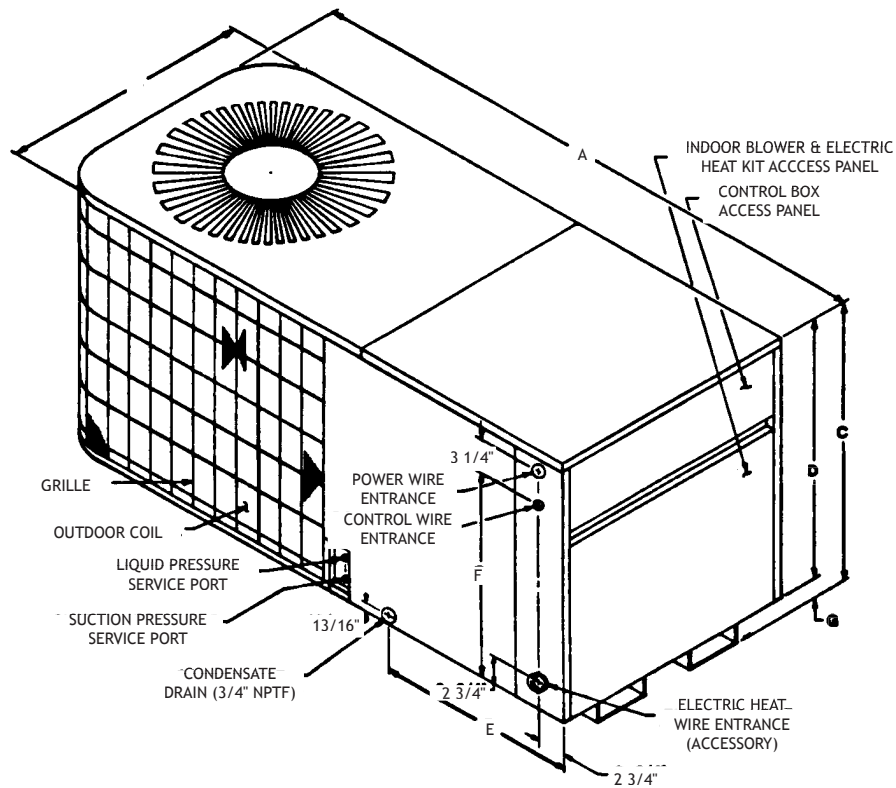
Model	Speed	Volts		E.S.P. (In. of Water)										
				0.1	0.2	0.3	0.4	0.5	0.6	0.7	0.8	0.9	1.0	
PH036-5	LOW	415	CFM	1295	1255	1220	1165	1105	1025	960				
			WATTS	425	405	385	360	340	315	290				
		380	CFM	1115	1090	1060	1035	1010	960	880				
			WATTS	365	350	340	320	305	290	260				
	HIGH	415	CFM	1525	1435	1355	1300	1235	1145	1050	970	895	815	
			WATTS	495	470	450	430	410	385	360	340	315	300	
		380	CFM	1435	1375	1305	1245	1185	1110	1015	950	875	800	
			WATTS	460	440	415	400	375	350	330	320	305	290	
PH048-5 PH060-5	LOW	415	CFM	1695	1605	1565	1540	1520	1435	1395				
			WATTS	590	555	530	515	495	460	440				
		380	CFM	1560	1520	1490	1465	1425	1340	1230				
			WATTS	570	535	510	490	460	410	370				
	HIGH	415	CFM	1970	1900	1820	1710	1610	1460	1360	1295	1160	1050	
			WATTS	690	650	600	560	510	470	440	410	380	360	
		380	CFM	1830	1785	1720	1630	1530	1415	1290	1195	1075	950	
			WATTS	620	580	540	500	460	420	390	340	310	300	

NOTES:

1. Data shown is dry coil. Wet coil pressure drop is approx. 0.1" water.
2. Data shown does not include filter pressure drop.

PRODUCT SPECIFICATIONS

Dimensions



MODEL	A	B	C	D	E	F	G
PH036/048/060	63"	32"	34 ⁹ / ₈ "	32 ¹ / ₂ "	21 ⁷ / ₈ "	27 ⁵ / ₁₆ "	1 ⁷ / ₈ "

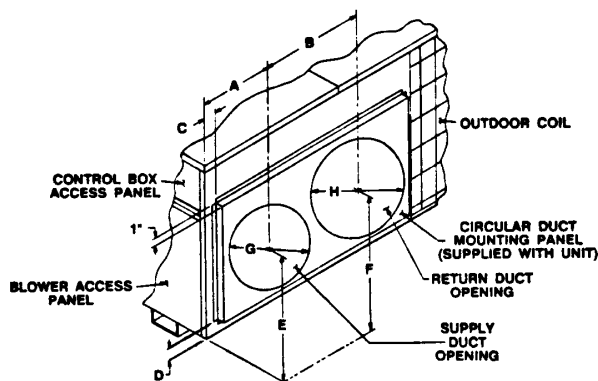
Accessories

ROOF CURB	PCCP42-60
DOWN FLOW PLENUM	PCP42-60
MANUAL FRESH AIR DAMPER	PCMD42-60
ECONOMIZER - DOWN FLOW	PCE42-60
ROOM THERMOSTAT	CHT18-60

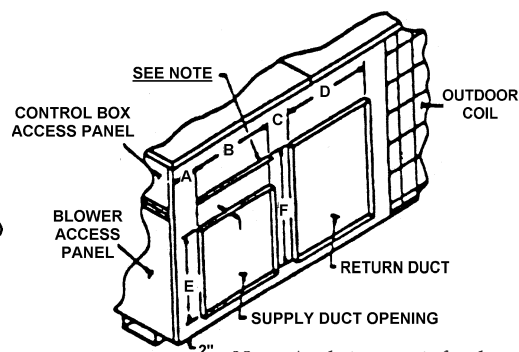
NOTE - Down Flow Plenum includes Filter Rack.

Chassis Sizes

LARGE
PH036
PH048
PH060



UNIT WITH CIRCULAR DUCT PANEL REMOVED



Note: Angle is on unit for the option of having the same size supply and return duct work to unit.

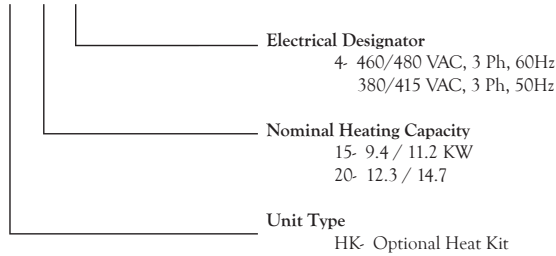
MODEL	A	B	C	D	E	F	G	H
PH036/048/060	10 ¹¹ / ₁₆ "	19"	2 ¹ / ₄ "	1 ¹¹ / ₁₆ "	9 ⁵ / ₈ "	10 ³ / ₈ "	14"	14"

MODEL	A	B	C	D	E	F
PH036/048/060	3 ³ / ₄ "	14"	5"	14"	14"	1 ¹¹ / ₁₆ "

PRODUCT SPECIFICATIONS

Heat Kit Model Identification

HK 20 - 4



Heat Kit Selection

	PH036-5	PH048-5	PH060-5
HK15-4	X	X	X
HK20-4	X	X	X

Heat Kit Electrical Data

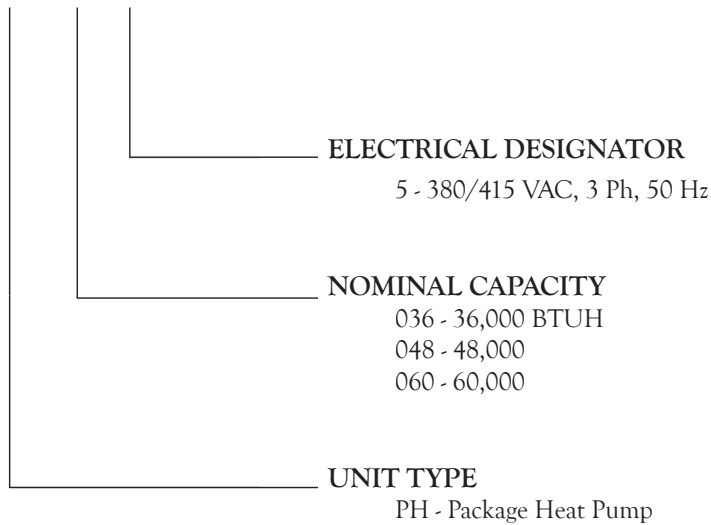
Model	Nominal kW	Minimum Ampacity 380- / 415V	Maximum Overcurrent Protection 380 / 415V
HK15 - 4	9.4/11.2	15/16	20/20
HK14 - 4	12.3/14.7	19/21	30/30

KW Correction Factor for 3-Phase Heat Kit

Supply Voltage	415	410	400	390	380
Correction Voltage	1.00	0.98	0.93	0.88	0.84

Model Identification

PH 036 - 5



(ALL UNITS ARE DIRECT DRIVE)

Quality Makes the Difference!

All of our systems are designed and manufactured with the same high-quality standards, regardless of size or efficiency. We have designed these units to significantly reduce the most frequent causes of product failure. They are simple to service and forgiving to operate. We use quality materials and components. Finally, every unit is run-tested before it leaves the factory. That's why we know...there's no better quality.

Visit our web site at
www.goodmanmfg.com for information on:
• Goodman Products • Customer Services • Parts

Goodman Manufacturing Company, L.P.
2550 North Loop West, Suite 400
Houston, TX 77092
USA

Goodman Manufacturing Company, L.P., reserves the right to discontinue, or change at any time, specifications or designs without notice or without incurring obligations.
Copyright © 2003 Goodman Manufacturing Company, L.P. • Houston, Texas • Printed in the USA. • Goodman products are made proudly in the USA.