

PGB SERIES

50 Hz

Gas/Electric Package Air Conditioning

10 SEER

5 Ton

Cooling Capacity:
60,000 BTUH [17.6 kW]

Heating Input Rates:
150,000 BTUH [44 kW]



The PGB 50 Hz gas/electric package air conditioner is designed for side-by-side or downflow applications. It may be installed on a rooftop or at ground level.

Standard Features

- Single-speed evaporator blower motor
- Copper tube, aluminum fin coils
- Quiet operating top condenser discharge grille
- Totally enclosed, permanently lubricated outdoor fan motors
- Hermetically sealed compressor with internal relief valve
- Fully charged R-22 systems
- High-efficiency performance
- Liquid line filter drier
- Power-assisted combustion requiring no vent cap
- Bottom handling rails
- Aluminized steel heat exchanger cells
- Watershed base
- Hot surface pilot ignition system

Cabinet Construction

- Powder-paint finish with 500-hour salt spray approval
- Fully insulated with blankets of fiberglass
- Convenient access panels

Accessories

- L.P. Gas Conversion Kit
- Room thermostat
- High and Low Pressure Switch Kit
- Low Ambient Kit
- Roof curb
- Concentric converter
- Economizer (horizontal and vertical)
- Manual fresh air damper (0-25%)
- Motorized fresh air damper (0-25%)
- Rectangular to round converter
- Downflow filter rack

PRODUCT SPECIFICATIONS

Specifications

PGB060150-5	
Total Cooling - BTUH (kW)	58,000 (17.0)*
Sensible Cooling - BTUH ¹ (kW)	43,800 (12.8)*
Coolong CFM Nominal (L/S)	1950 (920)
SEER	10
EER ²	9.0
Sound Rating	8.4
Heating Input - BTUH (kW)	133,000 (39.0)-G31
Heating Output - BTUH (kW)	120,000 (35.3)-G20
Steady State Efficiency (Gross)	83%
Temp. Rise Range °F (°C)	40-65 (22-36)
Net Flue Efficiency	92%
Indoor Blower Type	DD
Indoor Blower Size - D x W (cm)	11" x 10" (27.9 x 25.4)
Indoor Blower Motor Horsepower	3/4
Evaporator Coil Number of Rows	4
Evaporator Coil Face Area - ft ² (m ²)	4.43 (0.41)
Evaporator Coil Rows/FPI (FPM)	14 (5.5)
Outdoor Fan Diameter (cm)	22" (55.9)
Outdoor Fan Motor Horsepower (kW)	1/3
Condenser Coil Number of Rows	1
Condenser Coil Face Area Total - ft ² /m ²)	14.95 (1.39)
Condenser Coil Fins per Inch (Fin/cm)	19 (7.5)
Electrical Phase	3
Electrical Volts	380-415
Electrical Compressor's RLA	15.0
Electrical Compressor's LRA	79.0
Electrical Indoor Blower's FLA	2.2
Electrical Outdoor Blower's FLA	1.2
Electrical Minimum Circuit Ampacity*	15.3
Electrical Maximum Fuse Size	20
Electrical Maximum HACR Breaker	20
Net Weight lbs. (kg)	545 (247.4)
Shipping Weight lbs. (kg)	555 (252.0)

Rating at I.D. dry bulb 95 °F (35 °C) and O.D. dry/wet bulb 80/67 °F (26.7/3.9 °C)

* Including motor heat of 2,000 BTUH (586 kW)

Evaporator Blower Air Flow Data

VOLTAGE	380		415	
	E.S.P. "H ₂ O (mBar)	CFM (L/S)	WATTS	CFM (L/S)
.10 (0.25)	1,830 (865)	655	2,055 (970)	735
.20 (0.50)	1,780 (840)	640	1,985 (940)	720
.30 (0.75)	1,735 (820)	620	1,915 (905)	685
.40 (1.00)	1,685 (795)	605	1,850 (875)	665
.50 (1.25)	1,650 (780)	590	1,785 (840)	635
.60 (1.50)	1,610 (760)	565	1,715 (810)	610

Note: Wet coil pressure drop: 0.15" W.C. H₂O (0.375 Mbar)

1) All blower data is dry coil without filter, add .08" (0.2 Mbar) for filter.

2) Wet coil pressure drop range for cooling tonnage in two different cabinets, larger pressure drop corresponds to the smaller cabinet.

PRODUCT SPECIFICATIONS

Accessories

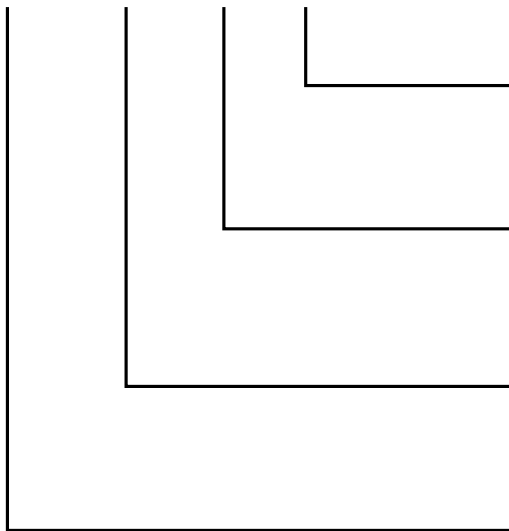
MODEL	DESCRIPTION
PGC-3	ROOF CURB
PGED-3	DOWNFLOW ECONOMIZER
PGEH-3	HORIZONTAL ECONOMIZER
PGMD1-3	MANUAL FRESH AIR DAMPER
PGMDM1-3	MOTORIZED FRESH AIR DAMPER
SQRPG-3	SQUARE TO ROUND CONVERTER
CDK-3	CONCENTRIC CONVERTER
PGFR-3	DOWNFLOW FILTER RACK

NOTES:

- 1) SEE FIGURES #5, 7 & 8, PAGE 3, FOR DETAILS.
- 2) SEE DIMENSIONS TABLE

Model Identification

PGB 060 150 - 5



ELECTRICAL DESIGNATOR
5-380/415, 3-phase, 50 Hz

NOMINAL HEATING INPUT
150 - 150,000 BTUH

NOMINAL COOLING CAPACITY
060 - 60,000 BTUH

PACKAGE UNIT (Direct Drive)

PRODUCT SPECIFICATIONS

Dimensions

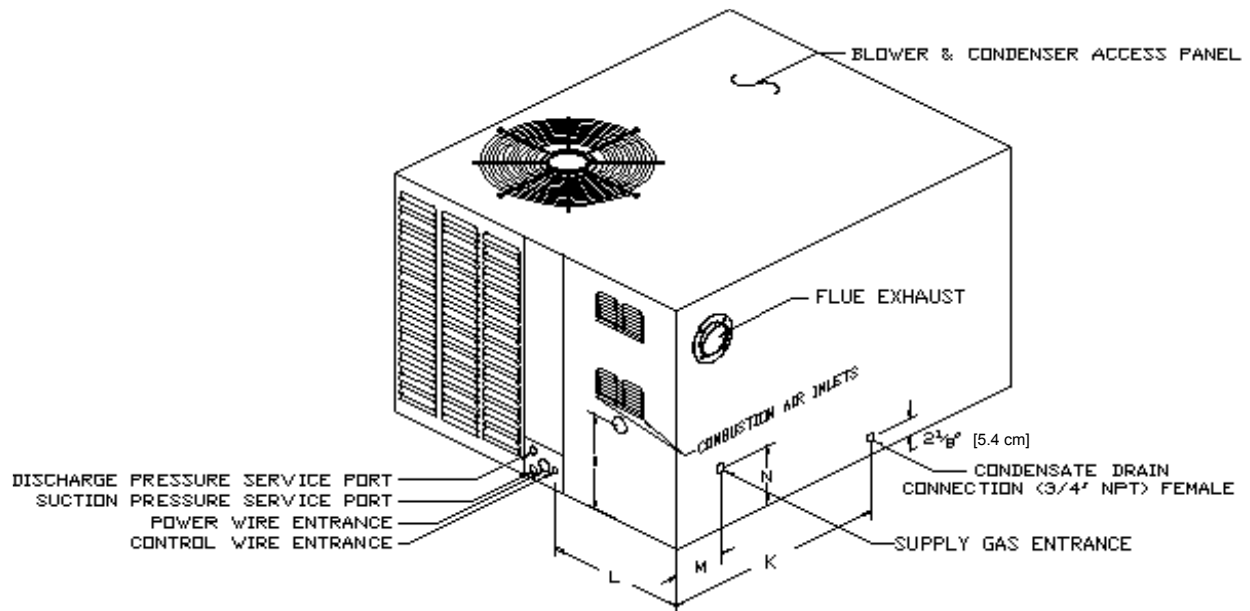


Figure 1

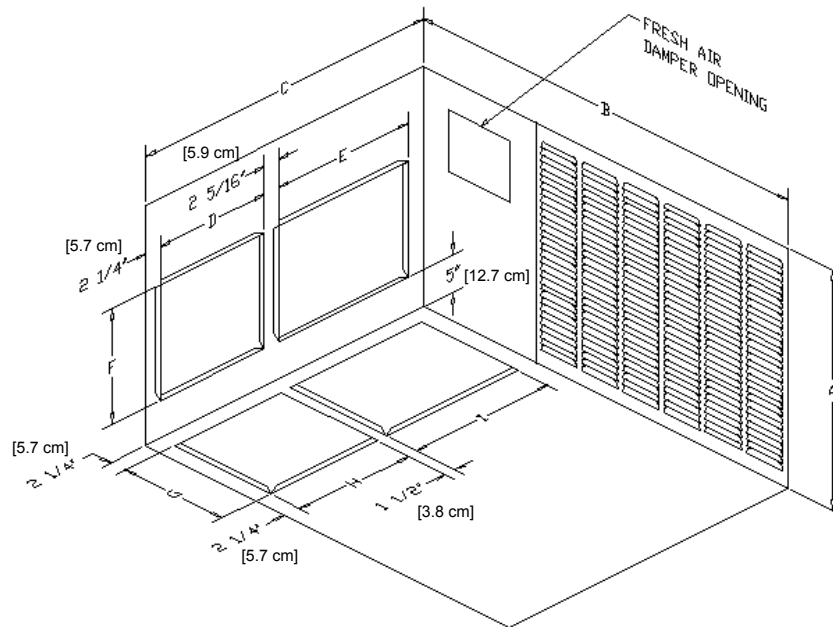


Figure 2

DIMENSIONS	INCH (CM)
A	33 5/8" (84.4)
B	55 3/8" (140.7)
C	58 1/8" (147.6)
D	24 5/8" (62.5)
E	26 5/8" (67.6)
F	17" (43.2)
G	17 1/4" (43.8)
H	25" (63.5)
I	27" (68.6)
K	32 1/2" (82.6)
L	27 3/4" (70.5)
M	7 1/4" (18.4)
N	10 1/8" (25.8)
O	14 7/8" (37.8)

LP Conversion Kit Honeywell HSP	LPM-01
Room Thermostat	CHT18-60
High & Low Pressure Switch Kit	HLPK-01
Low Ambient Kit	LA-01

PRODUCT SPECIFICATIONS

Dimensions (cont.)

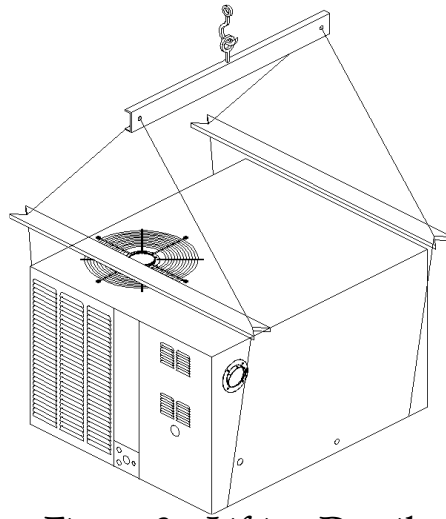


Figure 3 - Lifting Detail

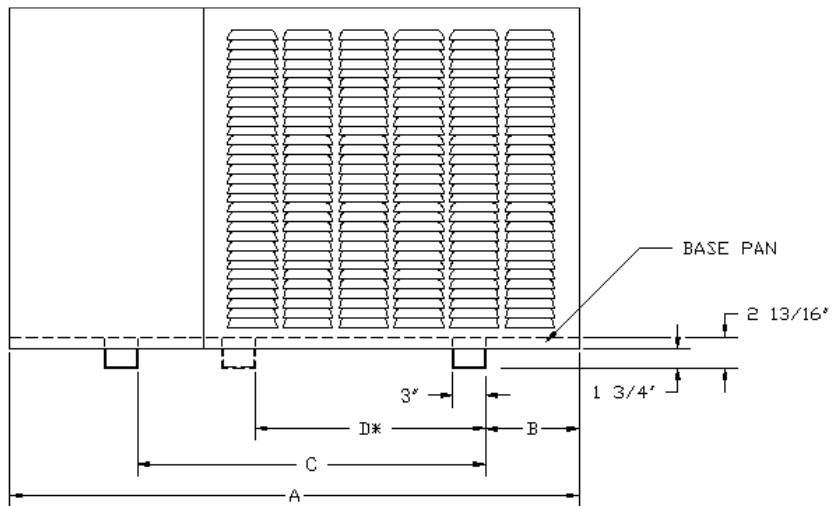


Figure 4 - Base Rail Detail

A	B	C	D
55-3/8" (140.7 cm)	8" (20.3 cm)	35-1/4" (89.5 cm)	23" (58.4 cm)

Dimensions (cont.)

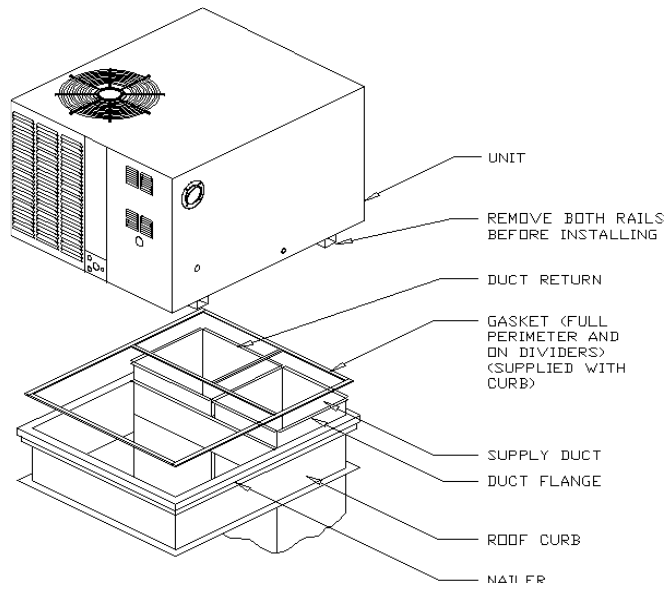


Figure 5 - Roof Curb

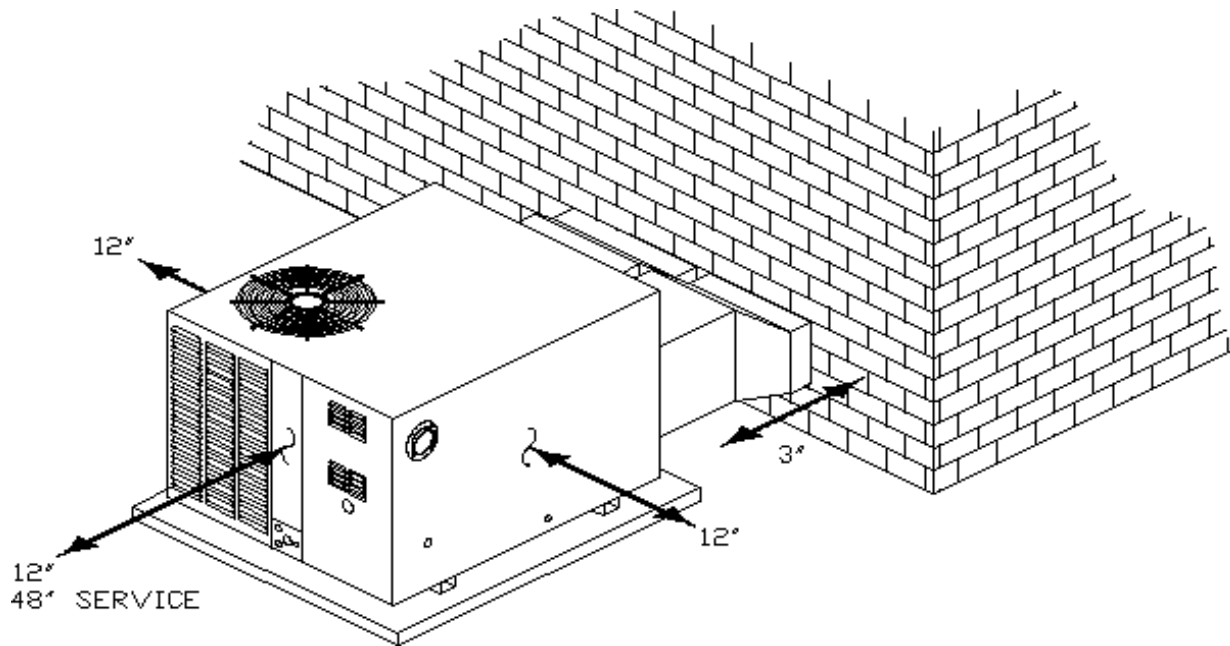


Figure 6 - Outside Slab Installation

PRODUCT SPECIFICATIONS

Dimensions (cont.)

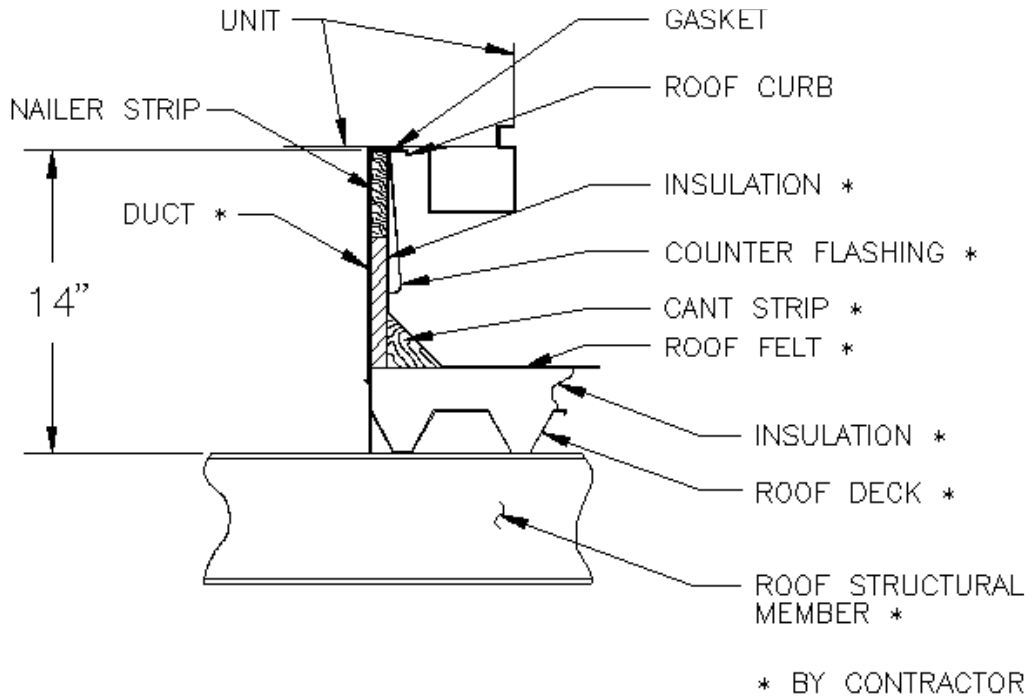


Figure 7 - Roof Curb Detail

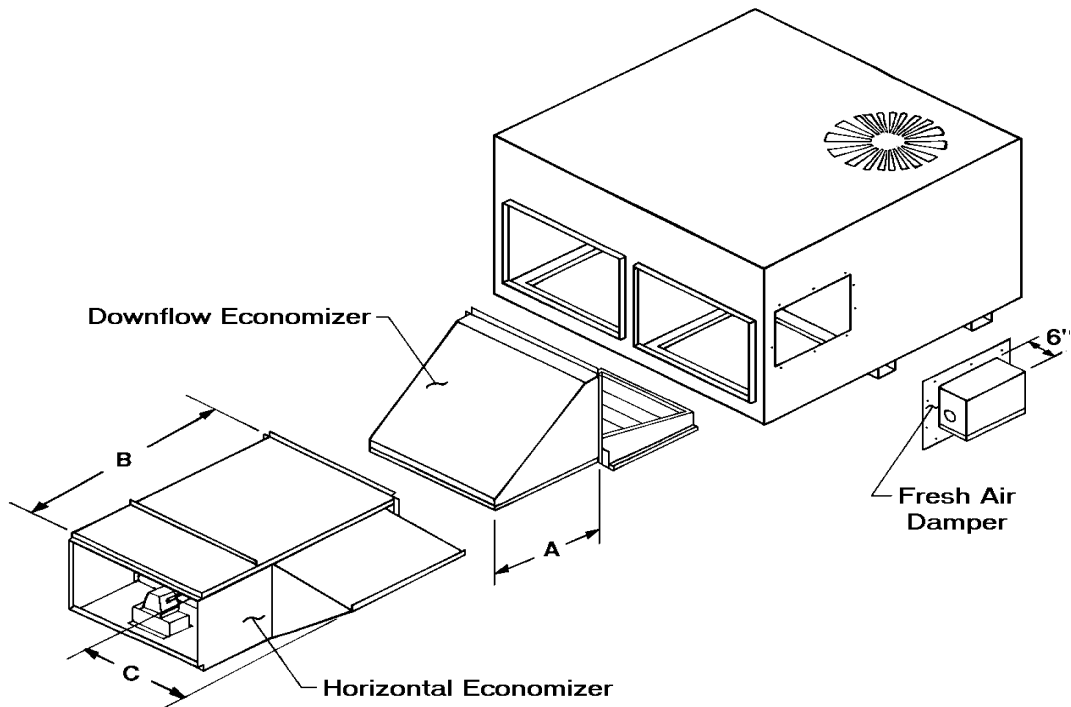


Figure 8 - Economizer and Fresh Air Damper (Optional)

A	B	C
22" (55.9 cm)	42" (106.9 cm)	17-3/16" (43.7 cm)

Quality Makes the Difference!

All of our systems are designed and manufactured with the same high-quality standards, regardless of size or efficiency. We have designed these units to significantly reduce the most frequent causes of product failure. They are simple to service and forgiving to operate. We use quality materials and components. Finally, every unit is run-tested before it leaves the factory. That's why we know...there's no better quality.

Visit our web site at
www.goodmanmfg.com for information on:
Goodman Products • Customer Services • Parts

Goodman Manufacturing Company, L.P.
2550 North Loop West, Suite 400
Houston, Texas 77092 USA

Goodman Manufacturing Company, L.P., reserves the right to discontinue, or change at any time, specifications or designs without notice or without incurring obligations.
Copyright © 2003 Goodman Manufacturing Company, L.P. • Houston, Texas • Printed in the USA. • Goodman products are made proudly in the USA.
