



## 4 & 5 TON (50 HZ) SELF-CONTAINED PACKAGED AIR CONDITIONING UNITS

### PC Series (50 Hz)

- Cooling Capacities from 42200 to 50300 BTUH.

### Description / Application

- Self-contained Air-Conditioning Units.
- Side by Side application.
- Outdoor Packaged Units for Ground or Rooftop Applications.

### Accessories

- Heat Kit from 11.2 to 14.7 KW with plug in connection.
- Room Thermostat (CHT18-60).
- Outdoor Thermostat (OT18-60).

### Accessories (Field Supplied)

- Roof Curb.
- Downflow Plenum (includes filter rack).
- Manual Fresh Air Damper (to be used w/ Downflow Plenum).
- Economizer (to be used with Downflow Plenum).

### Cabinet Construction

- Heavy gauge, G-90 galvanized, with removable access panels, completely weatherized, properly reinforced and braced. Steel sheet metal shall be zinc-coated and galvanized by the hotdip process.
- Fully insulated air handling compartment.
- Convenient access panels.

### Standard Features

- Two speed evaporator blower motor, low speed for low static applications, high speed for high static applications.
- Quiet operating top condenser discharge.
- Copper tubes - Aluminum fin coils.
- Totally enclosed, permanently lubricated condenser fan motor.
- Both condenser fan and evaporative blower motors are provided with internal thermal overload protection.
- Hermetically sealed reciprocating compressor with internal relief valve and internal overload protection.
- Fully charged R-22 system.
- Liquid line filter drier.
- High efficiency performance.
- Bottom pan rails elevate unit above slab.
- High pressure manual reset control.

### Accessory Heat Kit Features

- Primary limit protection.
- Rust resistant nickel Chromium heating elements. (See Electrical Data Chart)

### Third Party Tested

- Independent third party performance tested by ETL Testing Laboratories, Inc. Per ARI Standard 210-240.

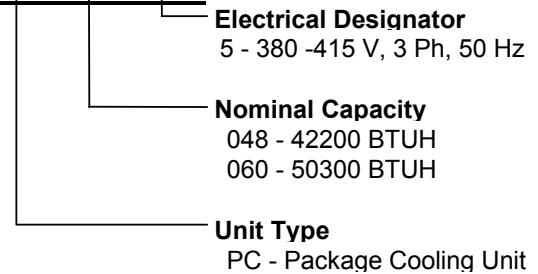
Made in the USA by:  
Goodman Manufacturing Company, L.P.  
1501 Seamist - Houston, Texas 77008

## PC - DATA AND SPECIFICATIONS

	PC048-5A	PC060-5A
Total Cooling Capacity - BTUH	42200	50300
Sensible Cooling Capacity - BTUH	29800	32200
EER	9.63	8.15
Sound Rating (bels)	8.4	8.4
Indoor Blower		
Type	DD	DD
Size -D x W	9x8	10x8
Motor H.P.	1/2	3/4
Evaporator Coil		
Face Area (ft <sup>2</sup> )	6.44	6.22
Fins/Inch	15	12
No. of Rows	2	3
Outdoor Fan		
Fan Dia. (inches)	22	22
Motor H.P.	1/4	1/4
Condenser Coil		
Face Area (ft <sup>2</sup> )	16.2	16.2
Fins / Inch	22	22
No. of Rows	1	1

## MODEL IDENTIFICATION

### PC060-5A



(ALL UNITS ARE DIRECT DRIVE - DD)

**EER** = Energy Efficiency Ratio = Capacity (BTUH)/KW Input  
**KW INPUT** = Compressor + Indoor and Outdoor Blower Watts  
 Cooling performance based upon standard airflow CFM.  
 Performance of units tested and verified by ETL Testing Laboratories.  
 Total Cooling Capacities is gross which does not include the effect of the indoor motor.

## ELECTRICAL RATINGS

MODEL	POWER SUPPLY			*MINIMUM CIRCUIT AMPACITY	MAXIMUM OVERCURRENT PROTECTION	MAX VOLTS	MIN VOLTS	COMPRESSOR			BLOWER MOTOR		COND. FAN MOTOR	
	VOLTS	PH	HZ					RLA	LRA	WATTS	FLA	WATTS	FLA	WATTS
PC048-5A	380/415	3	50	12.9	20	456	342	8.4	45	3680	1.3	355	0.6	225
PC060-5A	380/415	3	50	16.4	20	456	342	10.5	62	4955	2.2	715	0.6	215

\*Wire size should be determined in accordance with Local Electrical Codes. Extensive wire runs will require larger wire sizes.

## EVAPORATOR BLOWER SPECIFICATIONS

MODEL	SPEED	AIRFLOW	EXTERNAL STATIC PRESSURE (inches water column)				
			0.1	0.2	0.3	0.4	0.5
PC060-5A	LOW	CFM	1885	1840	1795	1675	1575
	HIGH	CFM	2030	1955	1900	1760	1655
PC048-5A	LOW	CFM	1540	1450	1315	1215	1070
	HIGH	CFM	1590	1490	1395	1280	1120

## EXPANDED RATINGS

### PCO48-5

### PACKAGE

INDOOR AIR		CONDENSER AIR TEMPERATURE														
SCFM	WB	85F			95F			105F			115F			120F		
		TOTAL MBTUH	SENS MBTUH	WATTS KWI	TOTAL MBTUH	SENS MBTUH	WATTS KWI	TOTAL MBTUH	SENS MBTUH	WATTS KWI	TOTAL MBTUH	SENS MBTUH	WATTS KWI	TOTAL MBTUH	SENS MBTUH	WATTS KWI
1118	72	45.5	20.6	4.21	43.1	19.7	4.39	40.6	18.9	4.6	36.5	17	4.9	36.6	18.8	4.8
	67	41.4	25.7	3.92	39.4	24.9	4.13	36.9	24	4.34	32.8	22.7	4.62	33.1	25.0	4.6
	62	38.1	30.6	3.7	37.1	29.7	3.92	36.1	28.9	4.13	32.4	26.2	4.32	32.8	28.9	4.3
1315	57	36.9	32.6	3.62	35.3	31.2	3.83	33.2	29.5	4.09	30	26.2	4.28	30.4	28.9	4.3
	72	47.2	22.9	4.3	44.7	22	4.51	42.2	21.5	4.73	37.8	19.1	5.06	37.9	21.1	5.0
	67	43.5	29.5	4.04	41	28.6	4.26	38.5	27.7	4.47	34.4	25.4	4.76	33.2	28.0	4.7
1512	62	40.2	35.2	3.83	38.1	33.7	4.04	36.5	32	4.26	32.8	28.6	4.58	33.1	31.6	4.5
	57	39.8	35.5	3.83	38.1	33.7	4.04	36.5	32	4.26	32.8	28.6	4.57	33.1	31.6	4.5
	72	48.4	24.9	4.39	45.9	24	4.6	43.1	23.2	4.81	39	21.3	4.52	39.2	24.0	5.0
1512	67	44.7	32.9	4.13	42.2	32	4.34	39.8	30.9	4.56	35.7	28.3	4.86	36.0	31.4	4.8
	62	42.6	37.5	4	40.2	35.8	4.21	38.5	34	4.43	34.5	30.2	4.76	34.7	33.5	4.7
	57	42.6	37.5	4	40.2	35.8	4.21	38.5	34	4.43	34.5	30.2	4.76	34.7	33.5	4.7

### PCO60-5

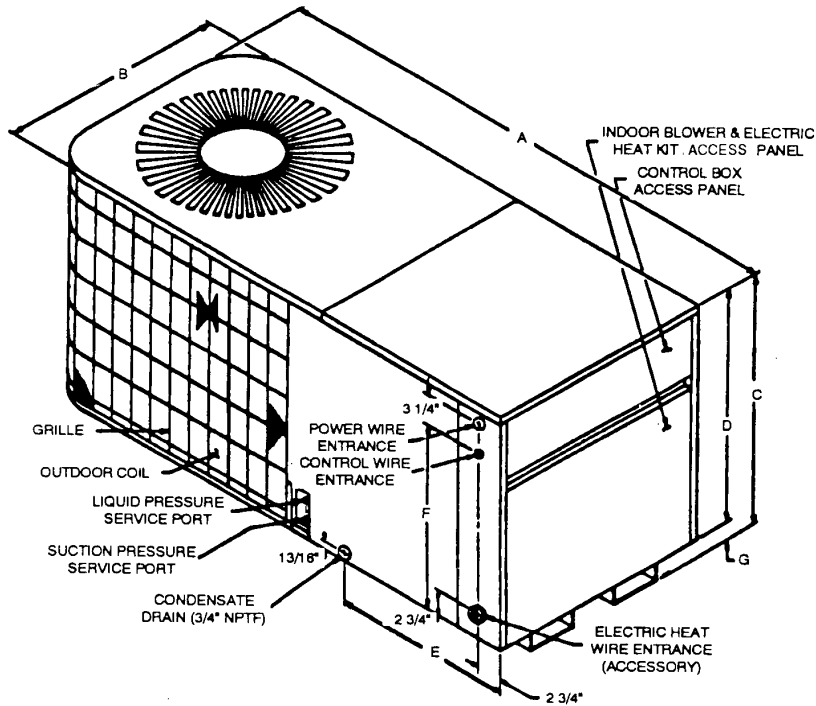
### PACKAGE

INDOOR AIR		CONDENSER AIR TEMPERATURE														
SCFM	WB	85F			95F			105F			115F			120F		
		TOTAL MBTUH	SENS MBTUH	WATTS KWI	TOTAL MBTUH	SENS MBTUH	WATTS KWI	TOTAL MBTUH	SENS MBTUH	WATTS KWI	TOTAL MBTUH	SENS MBTUH	WATTS KWI	TOTAL MBTUH	SENS MBTUH	WATTS KWI
1615	72	53.2	21.4	5.82	50.3	20.5	6.04	47.4	19.6	6.35	43.3	17.7	6.54	42.8	21.4	6.64
	67	48.4	26.8	5.41	46.0	25.9	5.67	43.1	25.0	5.99	39.0	23.7	6.22	38.7	28.5	6.30
	62	44.5	31.8	5.11	43.3	30.9	5.38	42.2	30.0	5.70	38.6	27.3	5.91	38.4	32.9	5.94
1900	57	43.1	33.9	5.00	41.2	32.4	5.27	38.8	30.6	5.64	35.7	27.3	5.85	35.5	32.9	5.88
	72	55.1	23.8	5.94	52.2	22.9	6.20	49.3	22.3	6.52	44.8	20.0	6.70	44.3	24.0	6.82
	67	50.8	30.6	5.58	47.9	29.8	5.88	45.0	28.9	6.17	41.0	26.5	6.38	38.8	31.9	6.47
2010	62	46.9	36.6	5.29	44.5	35.1	5.56	42.6	33.3	5.88	39.0	29.9	6.17	38.7	36.0	6.24
	57	46.5	36.9	5.29	44.5	35.1	5.56	42.6	33.3	5.88	39.0	29.9	6.17	38.7	36.0	6.24
	72	56.5	25.9	6.05	53.6	25.0	6.32	50.3	24.1	6.64	46.2	22.2	6.80	45.8	27.3	6.93
2010	67	52.2	34.2	5.70	49.3	33.3	5.97	46.5	32.1	6.29	42.4	29.6	6.49	42.1	35.7	6.59
	62	49.8	39.0	5.52	46.9	37.2	5.79	45.0	35.4	6.11	41.0	31.5	6.38	40.6	38.1	6.47
	57	49.8	39.0	5.52	46.9	37.2	5.79	45.0	35.4	6.11	41.0	31.5	6.38	40.6	38.1	6.47

### LEGEND AND NOTES

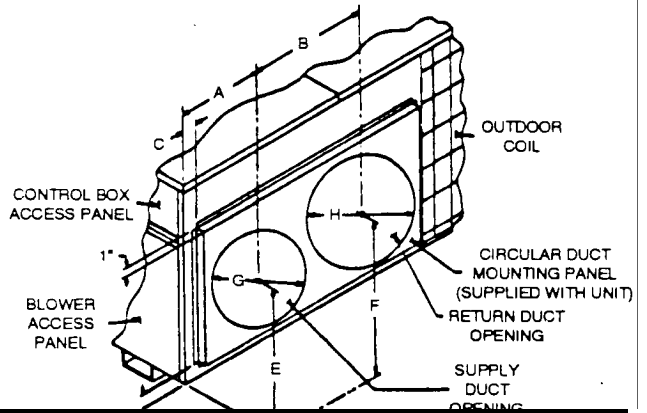
1. All capacities are gross and do not include the effect of the indoor motor.
2. **SCFM** = Supply air flow (Standard CFM)
3. **WB** - Entering wet bulb temperature deg F
4. **MBTUH** - 1000 BTU/Hr
5. **WATTS KWI** - Total kw input including compressor, outdoor and indoor motor watts
6. Capacities shown are based upon 80 deg F Dry Bulb entering air at the evaporator coil. For sensible heat capacities at other 80°F Dry Bulb, deduct 84 BTUH per 100 CFM of evaporator coil air flow for each degree below 80°F, or add 84 BTUH per 100 CFM of evaporator coil air flow per degree above 80°F.
7. All units are suitable to operate in an ambient temperature of 125°F.

**PC048-5 / PC060-5**



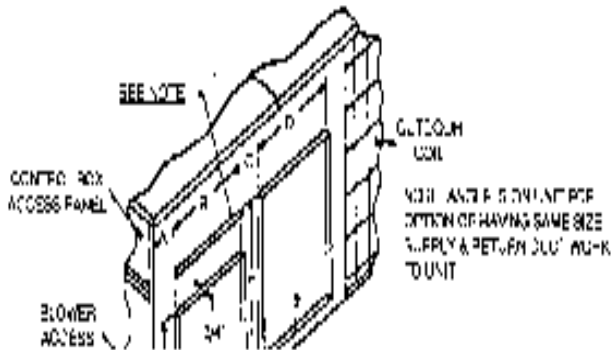
MODELS NUMBER	A	B	C	D	E	F	G
PC 048-5/PC 060-5	63"	32"	34 3/8"	32 1/2"	21 7/8"	27 5/16"	1 7/8"

MODELS	SHIPPING WEIGHT LBS(KG).
PC048-5	353(162.3)
PC060-5	370(168.0)



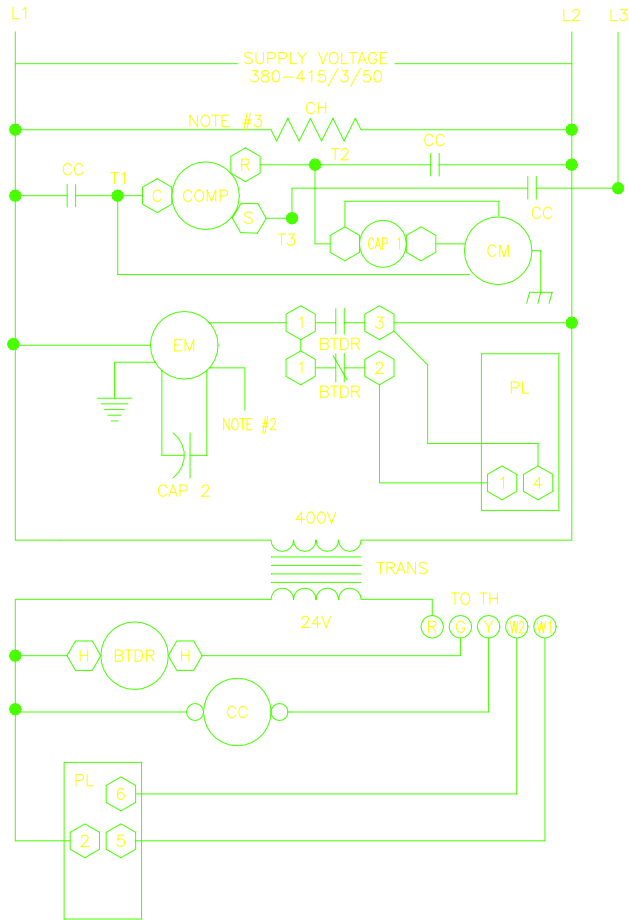
MODEL NUMBER	A	B	C	D	E	F	G	H
PC 048-5/PC 060-5	10 11/16"	19"	2 1/4"	11/16"	9 1/8"	2 1/4"	14"	14"

UNIT WITH CIRCULAR DUCT PANEL REMOVED



MODEL NUMBERS	A	B	C	D	E	F
PC 048-5 / PC 060-5	3 3/4"	14"	5"	14"	14"	16"

# SCHEMATIC WIRING DIAGRAM "PC" SERIES, PC048-5A, PC060-5A PACKAGE AIR CONDITIONING UNITS



- |      |                         |
|------|-------------------------|
| BTDR | BLOWER TIME DELAY RELAY |
| CAP  | CAPACITOR               |
| COMP | COMPRESSOR              |
| CM   | CONDENSER MOTOR         |
| CC   | CONTACTOR               |
| CH   | CRANKCASE HEATER        |
| EM   | EVAPORATOR MOTOR        |
| GL   | GROUND LUG              |
| PL   | PLUG                    |
| SC   | SPLICE CONNECTOR        |
| TH   | THERMOSTAT              |
| LPS  | LOW PRESSURE SWITCH     |
| HPS  | HIGH PRESSURE SWITCH    |
| □    | MARK TERMINAL           |
| °    | UNMARKED TERMINAL       |
| *    | WIRE SPLICE             |

W - WHITE
G - GREEN
R - RED
Y - YELLOW

NOTE: CRANKCASE HEATER SUPPLIED ON 5 TON UNITS ONLY.