

**AR SERIES**  
50 Hz

**Multi-Position  
Electric Air Handler**

1½ and 5 Ton



*The AR Series electric air handler is designed for compact, versatile upflow, right or left horizontal and downflow applications. It may be located in a closet, utility room, attic, crawl space or basement.*

**Standard Features**

- Equipped with a check flowrater for heat pump and cooling operation
- Direct-drive, multi-speed motor to permit air volume variation for heating and cooling application needs
- Built-in coil with horizontal and vertical thermoplastic drain pans with secondary drains
- Copper tube, aluminum fin coil
- Built-in filter provision
- Power supply entry at top
- Low-voltage entry on left side and top
- Transformer and blower time delay on all units

**Cabinet Construction**

- Fully insulated steel cabinet
- G90 galvanized stucco finish with painted front panels

**Accessories**

- Pre-tested, pre-wired heat kits in 3, 5, 6, 8, 10, 15, 20 kW, single-phase models; featuring electric heat limit control, rust-resistant nickel chromium heating elements and select models with circuit breakers
- Permanent washable plastic airfilters (FIL18-32, FIL36-42, FIL48-61)

## PRODUCT SPECIFICATIONS

### Electrical Data

Model	Single Supply Circuit		Minimum VAC	Maximum VAC	Blower Motor	
	Minimum Ampacity	Maximum Overcurrent Prot. Amps			FLA	HP
	@220/240V	@220/240V				
A24-00-2R	1.0/1.0	15/15	198	264	.85	1/8
A36-00-2R	1.8/1.8	15/15	198	264	1.4	1/4
A48-00-2R	1.8/1.8	15/15	198	264	1.4	1/4
A60-00-2R	4.3/4.3	15/15	198	264	3.4	3/4

### Physical Data

Model	Blower		Coil Drain Connection FPT	Refrigerant Connection		Approximate Shipping Weight
	Diameter	Width		Liquid	Suction	
A24-00-2R	9½" [24.1]	6" [15.2]	¾" [1.9]	⅜" [.95]	¾" [1.9]	106 lbs. [48.0]
A36-00-2R	9½" [24.1]	8" [20.5]	¾" [1.9]	⅜" [.95]	¾" [1.9]	141 lbs. [63.9]
A48-00-2R	9½" [24.1]	8" [20.5]	¾" [1.9]	⅜" [.95]	⅞" [2.2]	173 lbs. [78.4]
A60-00-2R	10⅝" [26.9]	10⅝" [26.9]	¾" [1.9]	⅜" [.95]	⅞" [2.2]	192 lbs. [87.0]

[ ] Designates metric equivalents

### Blower Performance

Model	Speed	Airflow Delivered Against External Static Pressure				
		.1 [2.5]	.2 [5.0]	.3 [7.5]	.4 [10.0]	.5 [12.5]
A24-00-2R	HIGH	960 [453]	930 [439]	890 [420]	840 [397]	780 [368]
	LOW	810 [382]	780 [368]	760 [358]	720 [340]	670 [316]
A36-00-2R	HIGH	1,450 [685]	1,415 [668]	1,360 [642]	1,280 [604]	1,200 [567]
	LOW	1,260 [595]	1,240 [585]	1,200 [566]	1,145 [541]	1,060 [500]
A48-00-2R	HIGH	1,670 [789]	1,610 [760]	1,500 [708]	1,440 [680]	1,370 [647]
	LOW	1,310 [619]	1,300 [614]	1,290 [609]	1,280 [604]	1,260 [595]
A60-00-2R	HIGH	2,170 [1,025]	2,080 [982]	2,000 [944]	1,920 [907]	1,850 [874]
	LOW	1,900 [897]	1,810 [855]	1,700 [803]	1,590 [751]	1,500 [708]

Dry coil with Filter in Place

SCFM Correction for Wet Coil - 4%.

[ ] Designates metric equivalents

### Heater Kit Application Options

	A24-00-2R	A36-00-2R	A48-00-2R	A60-00-2R
HKR-03	X	X	X	X
HKR-05(c)	X	X	X	X
HKR-06	X	X	X	X
HKR-08(c)	X	X	X	X
HKR-10(c)	X	X	X	X
HKR-15C		X	X	X
HKR-20C		X	X	X

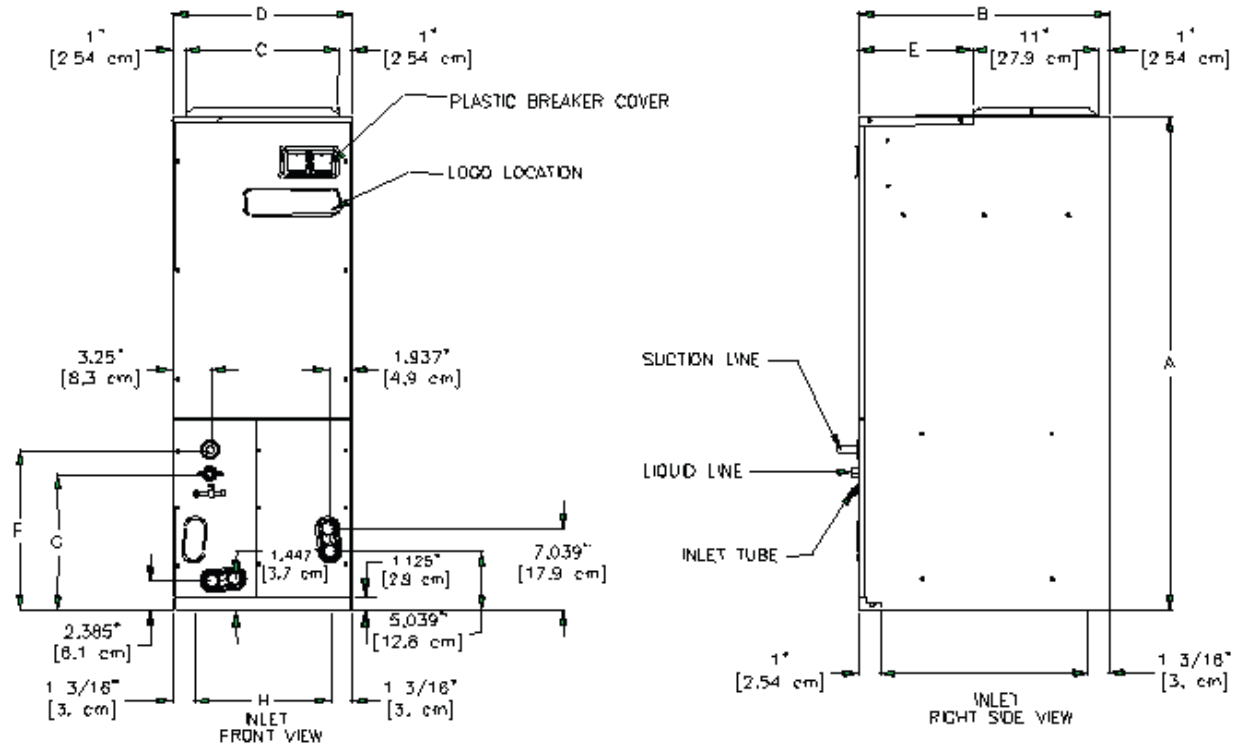
(c) circuit breakers optional

### Performance Ratings

Model	Nominal Cooling Capacity (tons)	Seasonal Efficiency AFUE%
A24-00-2R	2	100.0
A36-00-2R	3	100.0
A48-00-2R	4	100.0
A60-00-2R	5	100.0

# PRODUCT SPECIFICATIONS

## Dimensions



Base Model #	A	B	C	D	E	F	G	H	J	K
A24-002-2R	41.125 [107.0 cm]	22 [55.9 cm]	13.5 [34.3 cm]	15.5 [39.4 cm]	10 [25.4 cm]	13.375 [34.0 cm]	10.811 [27.5 cm]	13.125 [33.3 cm]	19.812 [50.3 cm]	3.563 [9.05CM]
A36-00-2R	46.75 [118.7 cm]	22 [55.9 cm]	17.5 [44.5 cm]	19.5 [49.5 cm]	10 [25.4 cm]	13.375 [34.0 cm]	10.811 [27.5 cm]	17.125 [43.5 cm]	19.812 [50.3 cm]	3.563 [9.05CM]
A48-00-2R A60-00-2R	53.25 [135.3 cm]	24 [61.0 cm]	20 [50.8 cm]	22 [55.9 cm]	12 [30.5 cm]	14.5 [36.8 cm]	11.935 [30.3 cm]	19.625 [49.8 cm]	21.812 [55.4 cm]	3.343 [8.49CM]

[ ] DESIGNATES METRIC EQUIVALENTS

---

## *Quality Makes the Difference!*

All of our systems are designed and manufactured with the same high-quality standards, regardless of size or efficiency. We have designed these units to significantly reduce the most frequent causes of product failure. They are simple to service and forgiving to operate. We use quality materials and components. Finally, every unit is run-tested before it leaves the factory. That's why we know...there's no better quality.

Visit our web site at  
[www.goodmanmfg.com](http://www.goodmanmfg.com) for information on:  
Goodman Products • Customer Services • Parts

**Goodman Manufacturing Company, L.P.**  
2550 North Loop West, Suite 400  
Houston, Texas 77092 USA

Goodman Manufacturing Company, L.P., reserves the right to discontinue, or change at any time, specifications or designs without notice or without incurring obligations.  
Copyright © 2003 Goodman Manufacturing Company, L.P. • Houston, Texas • Printed in the USA. • Goodman products are made proudly in the USA.

---